

DRAPER®

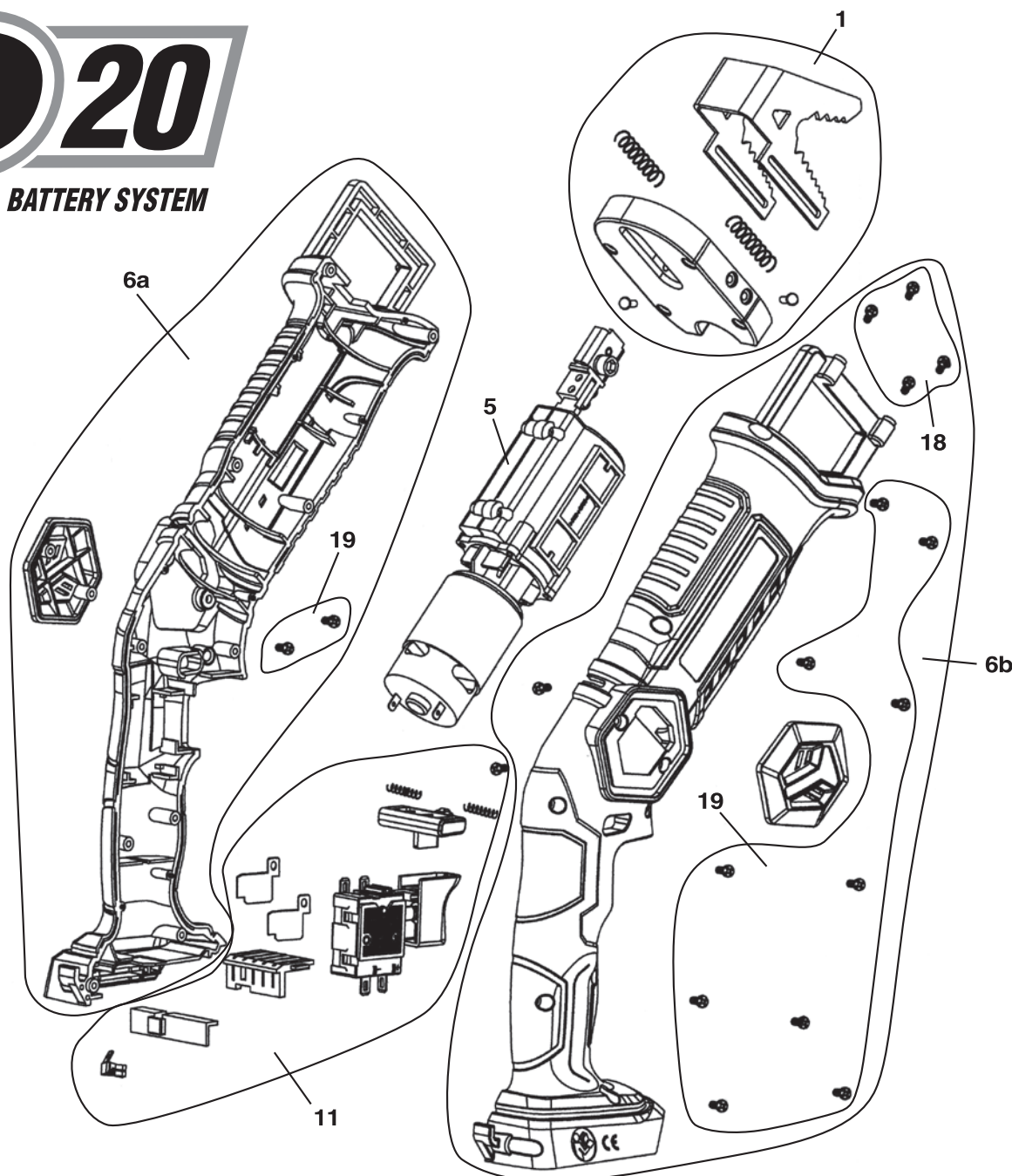
20V

PRUNING SAW



92422 - D20G/RS SPARE PARTS DRAWING

D20
MULTI-TOOL BATTERY SYSTEM



| KEY No. | PART No. | STOCK No. | DESCRIPTION |
|---------|-------------|------------|--------------------------------------|
| 1 | YD20G/RS-1 | 97446 | Branch holder assembly |
| 5 | YD20G/RS-5 | 97447 | Gear box assembly |
| 6 | YD20G/RS-6 | 97448(a+b) | Machine casing |
| 11 | YD20G/RS-11 | 97449 | Speed switch assembly |
| 18 | YD20G/RS-18 | 97452 | Pan head self tapping screw set x4) |
| 19 | YD20G/RS-19 | 97453 | Pan head self tapping screw set x12) |
| | | | |

| KEY No. | PART No. | STOCK No. | DESCRIPTION |
|---------|----------|-----------|-------------|
| | | | |
| | | | |
| | | | |
| | | | |
| | | | |
| | | | |

Helpline: +44 (0) 23 8049 4344 Sales Desk: +44 (0) 23 8049 4333 General Enquiries: +44 (0) 23 8026 6355 internet: drapertools.com email: sales@drapertools.com